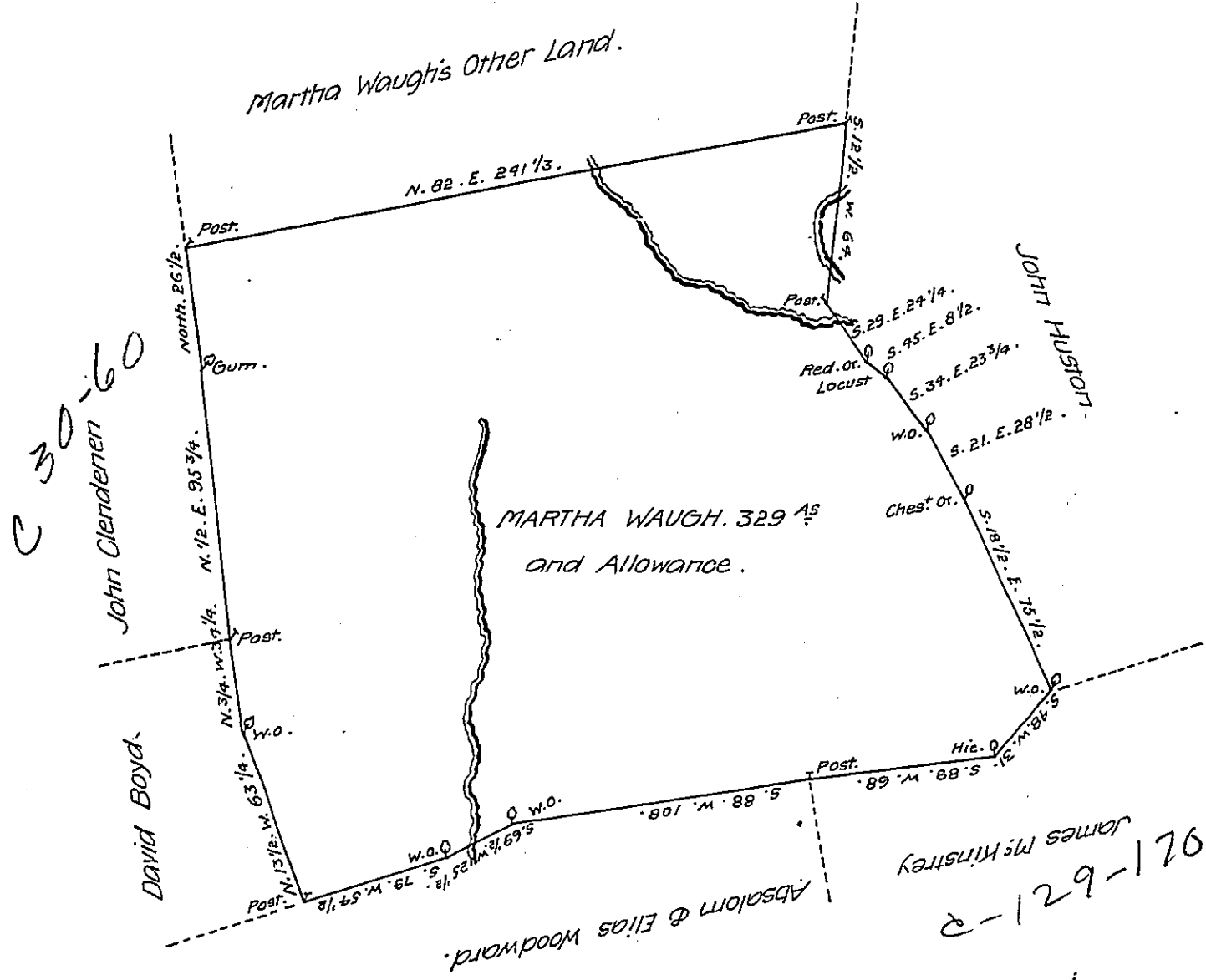


D-10-50



The Draught of a Tract of Land Situate on the East Pennsborough Township Cumberland County Containing Three Hundred and Twenty nine Acres and Allowance of Six Per Cent for Roads &c. Surveyed May 16th 1789. In Pursuance of a Warrant to Martha Waugh Dated March 16th 1789.

P: Saml. Lyon. D.S.

To Daniel Brodhead Esq.
Surveyor General.

IN TESTIMONY that the above is a copy of the original remaining on file in the Department of Internal Affairs of Pennsylvania, made conformably to an Act of Assembly approved the 16th day of February, 1833, I have hereunto set my Hand and caused the Seal of said Department to be affixed at Harrisburg, this eleventh day of September 1907.

Henry Hoover
Secretary of Internal Affairs.